

Better for Less.



CONCEPT 5 | ELEVATE SERIES

 x 4 bedrooms

 x 2 bathrooms

 x 2 car garage

14m Frontage

GROUND FLOOR: 87sqm

UPPER FLOOR : 100sqm

GARAGE : 35sqm

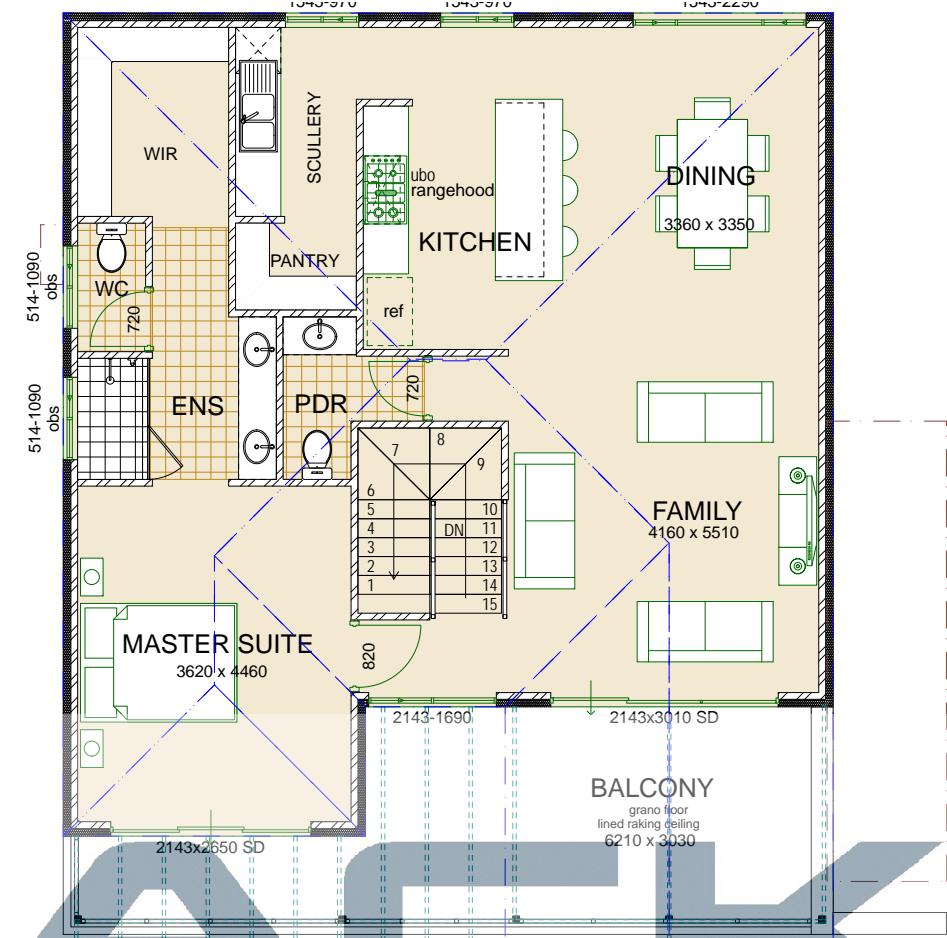
PORTICO : 9sqm

BALCONY : 24sqm

TOTAL AREA: 255sqm

4 Bedrooms? Check. Upstairs Living? Check. Separate downstairs Living? Check. Kitchen and Scullery? Check. Large Balcony? Check. This design ticks all the boxes. The panorama Balcony gives you plenty of outdoor living space that maximises any potential views. Having it all doesn't need to cost a fortune any more.

UPPER FLOOR



GROUND FLOOR

