

Better for Less.



JACK

CONCEPT 3 | ELEVATE SERIES

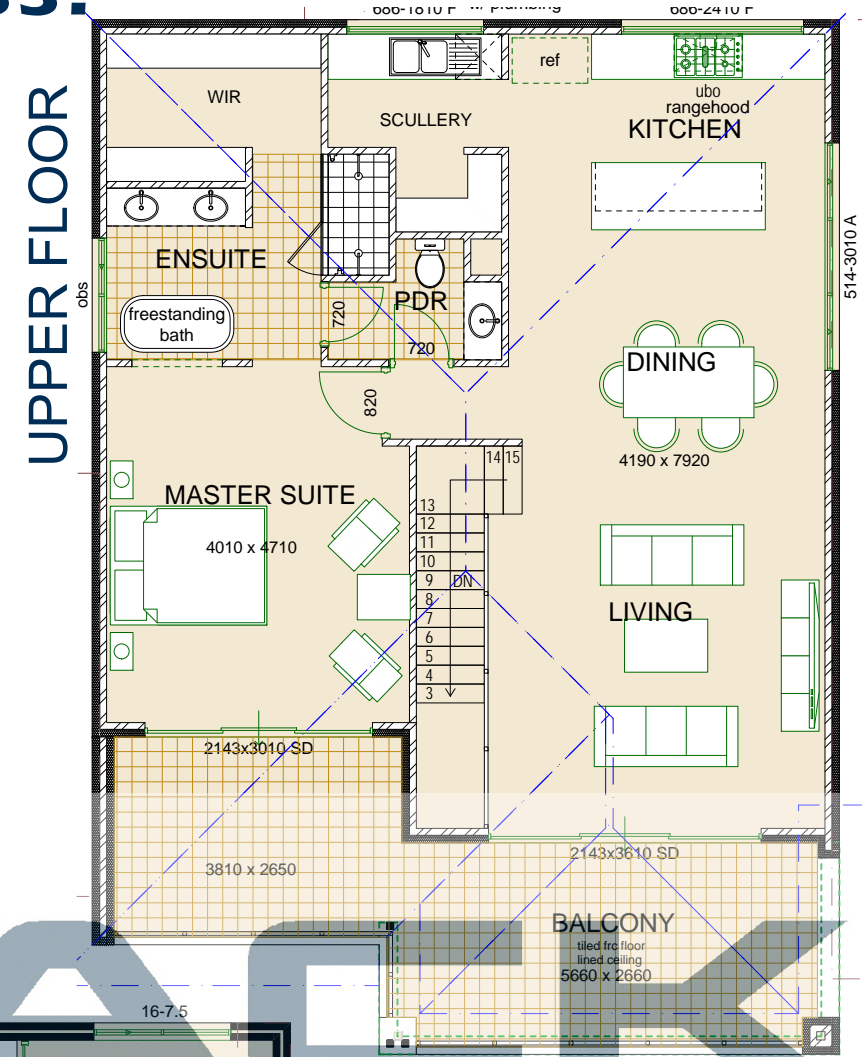
 x 4 bedrooms

 x 2 bathrooms

 x 2 car garage

13.5m Frontage
 GROUND FLOOR: 90sqm
 UPPER FLOOR : 102sqm
 GARAGE : 33sqm
 PORTICO : 9sqm
 ALFRESCO : 13sqm
 BALCONY : 28sqm
 TOTAL AREA: 275sqm

Have an amazing view that you want to maximise? Well this plan is for you. Comprising of a modern upstairs open living arrangement including a Scullery, you can be sure that when entertaining your guests you won't be tight for space. French doors open up onto a large Balcony maximising your outdoor living potential. The Master Suite doesn't miss out with a luxurious ensuite and direct access to the Balcony.



GROUND FLOOR

